

## **Best practice-1**

### **Creating a Greener Future: Eco Friendly Practices by College**

#### **Objectives of the Practice:**

- Implement strategies to maintain environment friendly practices on campus.
- Promote an eco-friendly culture through academic, co-curricular, and extracurricular activities.
- Assure awareness of the participatory environment.
- Adopt measures to lessen carbon footprint.

#### **Context:**

Our college aims to address global issues and act as a catalyst for environmental conservation and develop eco-responsible youth.

#### **The Practice:**

The campus is committed to sustainability through the implementation of eco-friendly strategies. Initiatives such as waste reduction, energy conservation, and green landscaping contribute to a healthier environment. Recycling bins are strategically placed across the campus, and water-saving technologies are employed. The campus stands as a testament to eco-conscious practices, with a robust commitment to green building standards and an extensive reliance on solar power. These efforts, coupled with awareness campaigns and eco-friendly events, foster a culture of environmental responsibility among students and staff, ensuring that our institution remains dedicated to sustainable practices.

Empowering young people to embrace eco-friendly lifestyles is paramount for a sustainable future. By integrating environmental education into curricula, organizing workshops, and promoting green initiatives, we foster a sense of environmental consciousness through organizing environmental quiz. Encouraging sustainable habits, such as reducing waste and embracing renewable energy, empowers the youth to make informed choices. A comprehensive Green policy governs every facet of the institution's operations, manifesting in tangible actions such as plantation drives, QR coded trees, mushroom cultivation, greenhouse, a steadfast ban on plastic usage within the campus, and the incorporation of rainwater harvesting units. Through these efforts, we aim to instil a lifelong commitment to environmental stewardship, ensuring the next generation actively contributes to the well-being of our planet.

Ensuring an informed and participatory environment is essential. Through regular communication channels, workshops, and community engagement initiatives, we strive to heighten awareness among stakeholders. This approach fosters a collaborative atmosphere where everyone is well-informed and actively participates, promoting a sense of shared responsibility and collective action for the betterment of our community and environment.

To reduce our carbon footprint, we implement sustainable practices such as energy-efficient technologies, waste reduction, and promoting eco-friendly transportation. By embracing renewable energy sources and advocating for responsible consumption, our institution actively contributes to minimizing environmental impact, demonstrating a commitment to a greener, more sustainable future.

### **Evidence of Success**

The college is ardently committed to the global pursuit of Sustainable Development Goals (SDGs), seamlessly integrating this ethos into its fabric. Beyond a mere inclusion in the curriculum as laid by KUK, the institution champions sustainability through a spectrum of participative activities. The campus stands as a testament to eco-conscious practices, with a robust commitment to green building standards and an extensive reliance on solar power. Embracing a circular economy, the institution spearheads Waste to Wealth initiatives, exemplifying an innovative approach to resource management. The proofs of various environment friendly activities are attached.

### **Problem Encountered and Resources Required**

- Breaking old habits: The largest problem is getting the public to adopt green practices and change their mindset.
- Herd mentality at work: persuading coworkers to willingly embrace digital transformation is a difficulty.
- Resource limitation: maintaining sustainable practices requires a large budget.
- Time constraint: Along with the curriculum and examination pattern motivating students to devote time for diverse activities is a constraint.

## **Best Practice-2**

### **Nurturing Social Responsibility: Achieving a More Inclusive Society**

#### **Objectives of the practice**

- Service to Community
- Awareness amongst masses regarding various relevant social issues
- Wellness both physical and mental

#### **Context**

In terms of the country's social and economic development, youth are the change agent. In India, there are many social problems that fall into the general categories of gender issues, poverty issues, caste issues and health difficulties. These problems can be rectified if the younger generation takes action. Higher education institutions place a strong emphasis on social responsibility in addition to academic growth. This includes educating young people about social concerns and preparing them to raise public awareness and discover answers. Youth should be inspired to fight against injustice and to assist, mentor, and educate the less fortunate members of society about their rights. The practice of extension and outreach programs to cultivate socially conscious citizens has been institutionalized by colleges.

#### **The Practice**

The institute has a locational advantage that allows it to address local issues and serve the community because of its prime location in the city of Karnal, which is a preferred educational hub for students from vicinity. The volunteers arrange community outreach programs, and clubs and societies instil a feeling of social responsibility among the youth. The college actively engages in community service, epitomizing its commitment to social responsibility through a multifaceted approach. The institution organizes impactful initiatives such as driving license drives, aadhar-updation camps help in recognizing the importance of empowering the community.

The college cultivates awareness among the masses on pertinent social issues through diverse initiatives. Utilizing platforms like rallies and outreach programs, it disseminates crucial information, fostering understanding and empathy. By addressing topics such as environmental sustainability, social justice, and health, the institution plays a pivotal role in shaping an informed and socially conscious community. The college goes beyond the confines of its campus, organizing rallies that serve as platforms for advocacy on various social issues, amplifying the impact of its community outreach. These efforts transcend traditional education, actively contributing to the collective understanding and dialogue on issues crucial for societal progress.

Complementing this, the college conducts regular blood donation camps, fostering a culture of altruism among students and the community. Aiming to contribute to public health, the institution spearheads vaccination drives, ensuring accessibility to preventive healthcare for the local population. Health check-up camps further extend the college's commitment to the overall well-being of the community, providing crucial medical services and raising awareness about preventive healthcare measures. Through these initiatives, the college

becomes a catalyst for positive change, actively addressing the diverse needs of the community and exemplifying the transformative power of education in shaping a socially responsible youth.

### **Evidence of Success**

The college's commitment to community service is evidenced by tangible impacts, such as increased volunteer participation and positive testimonials from beneficiaries. The awareness campaigns on social issues reflect success through measurable shifts in community attitudes and behaviors. Wellness initiatives showcase success through improved health indicators, reduced stress levels, and enhanced mental well-being among participants. Collectively, these outcomes underscore the institution's triumph in creating meaningful, sustainable impacts on both the community's welfare and awareness landscape. The proofs of various activities are attached.

### **Problem Encountered and Resources Required**

- **Cultural Sensitivity:** Understanding and respecting local cultures is crucial to avoid unintentional misunderstandings or conflicts.
- **Unforeseen Circumstances:** Natural disasters, political instability, or other unforeseen events can disrupt planned community service initiatives.
- **Resource Constraints:** Limited funding and resources can hinder the scale and effectiveness of community service projects.
- **Volunteer Engagement:** Maintaining consistent volunteer participation can be difficult due to time constraints or varying levels of commitment.

# BEST PRACTICE-1

## Creating a Greener Future: Eco Friendly Practices by College



# ENVIRONMENT FRIENDLY POLICIES



Green Policy



Energy Policy



Waste Management Policy

# ENERGY CONSERVATION

### Solar Power Plant



### Solar Power Plant



### LED Lights



### LED Lights



### Energy Efficient Equipment



### Solar Power Plant



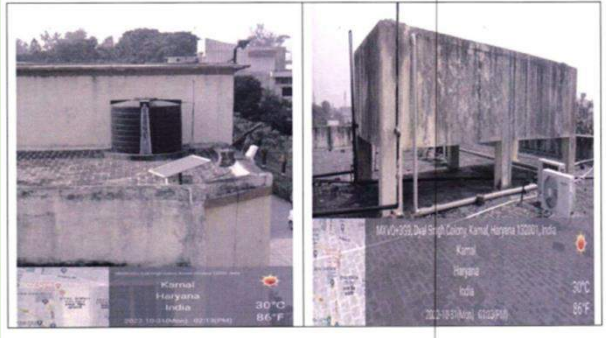
# WATER CONSERVATION

## Water Sensor Meter

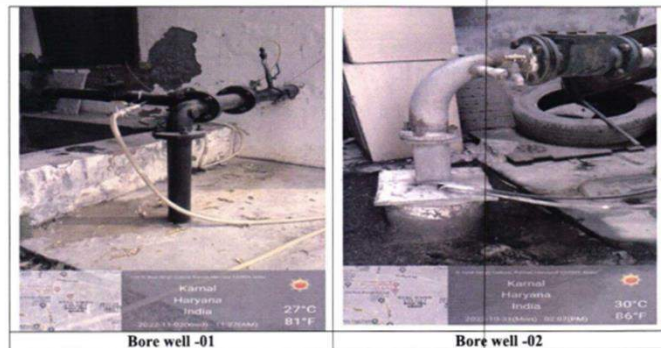


## Storage Tanks

Photographs of water storage tanks.



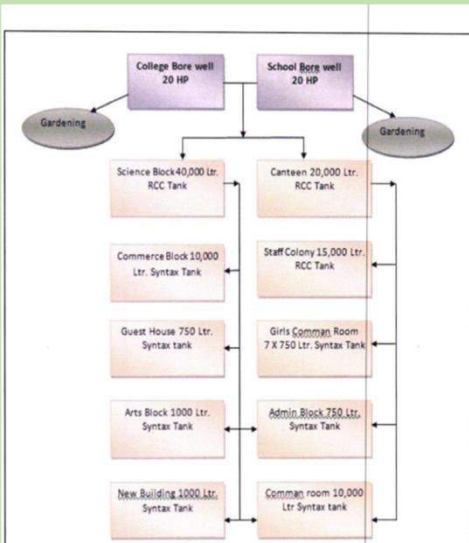
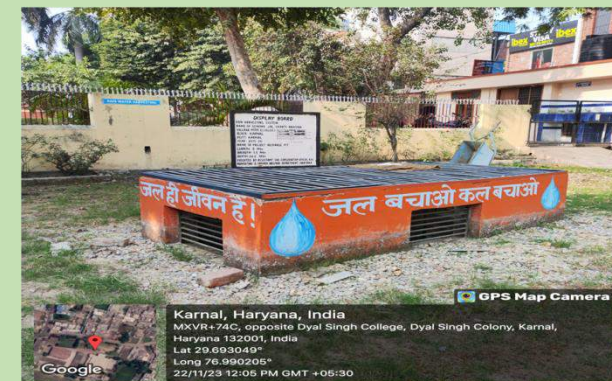
## Borewell



## Recycling RO Water



## Rain Water Harvesting units





# LANDSCAPING AND GREEN CAMPUS



# ENVIRONMENT FRIENDLY INITIATIVES

Poster making Competition on Environment



Quiz on Environment



Visit to Cactus Garden



Poster making Competition on Environment



Swachhta Abhiyan for Clean Environment



Best out of Waste Activity



## Practice of Green Souvenirs



## Faunal-Augmentation Drive



Faunal-Biodiversity Augmentation Drive 2022

## Rallies



## Mushroom Cultivation



## Vermicompost Pits



## Green House

# TREE PLANTATION AND SAPLING DISTRIBUTION DRIVES



# BEST PRACTICE-2

## Nurturing Social Responsibility: Achieving a More Inclusive Society



# Service to Community

## Aadhar Updation Camp



## Driving License Drive



## Vaccination Drive



## Inculcating Constitutional Values



# Community Service through maintainence of statue's





# Blood Donation Camp



# Mental and Physical Well-being

## Eye Check-up Camp



## Understanding Importance of Healthy Diet



## CPR Awareness



# Mental and Physical Well-being

Breast cancer awareness camp



Community service through Oral Health Camp



HIV-AIDS AWARENESS CAMP



Yoga Camp

